



 **ITALIANA**  
*ferramenta*  
**Fittings**  
MADE IN ITALY

**30** YEARS  
since 1994

**THE KITCHEN STUDIO**

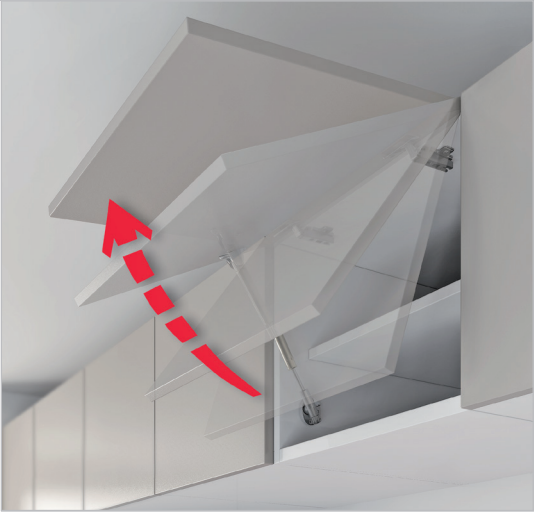


Lift up - Friction version

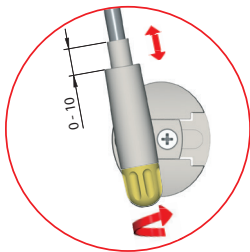
See table below for unit sizes

Refer to table below to check if 1 or 2 stays will be required

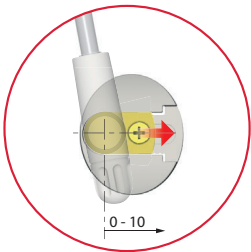
Lift up gas systems for wide range of cabinet shutters. Premium and exclusive cylinder finish and die cast design with opening angle adjustments.



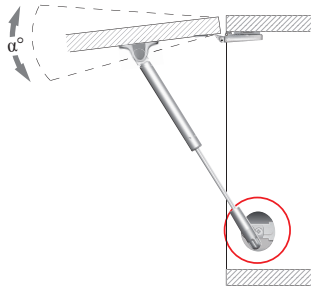
ADJUSTMENTS



INCREASE OPENING ANGLE  
Rotate the rotary knob.



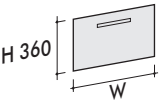
REDUCE OPENING ANGLE  
Move forward and backward the piston  
base plate in the bracket slot.



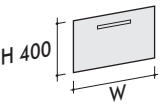
L. 244  $\alpha^\circ = +5^\circ / -6^\circ$   
L. 355  $\alpha^\circ = +2^\circ / -6^\circ$

KRABY LIFT UP FRICTION L. 244 mm  
Door in MDF 18 & 19 mm thick

Door height Door width and n° of Kraby x N



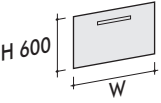
600 1 x 60 N -  
900 1 x 90 N -  
1000 1 x 90 N -  
1200 2 x 60 N -



600 1 x 60 N (for 18mm thick) -  
600 1 x 90 N (for door 19mm thick) -  
900 2 x 60 N -  
1000 2 x 60 N -  
1200 2 x 60 N -

KRABY LIFT UP FRICTION L. 355 mm  
Door in MDF 18 & 19 mm thick

Door height Door width and n° of Kraby x N



600 1 x 90 N -  
900 2 x 60 N -  
1000 2 x 60 N -  
1200 2 x 90 N -



# KRABY

## Drop down

Single Stay with 2 Kimana Hinges

Drop down gas systems for wide range of cabinet shutters. Premium and exclusive cylinder finish and die cast design with opening angle adjustments.

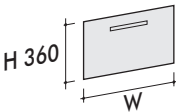


### KRABY DROP DOWN L. 244 mm

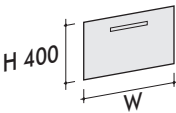
Door in MDF 18 & 19 mm thick

Door height

Door width and n° of Kraby



600	1 pc. -
900	2 pcs. -
1000	2 pcs. -
1200	2 pcs. -



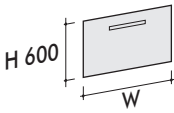
600	2 pcs. -
900	2 pcs. -
1000	2 pcs. -
1200	2 pcs. -

### KRABY DROP DOWN L. 355 mm

Door in MDF 18 & 19 mm thick

Door height

Door width and n° of Kraby



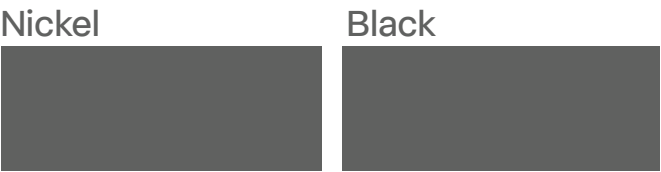
600	2 pcs. -
900	2 pcs. -
1000	2 pcs. -
1200	2 pcs. -





# KIMANA HINGES

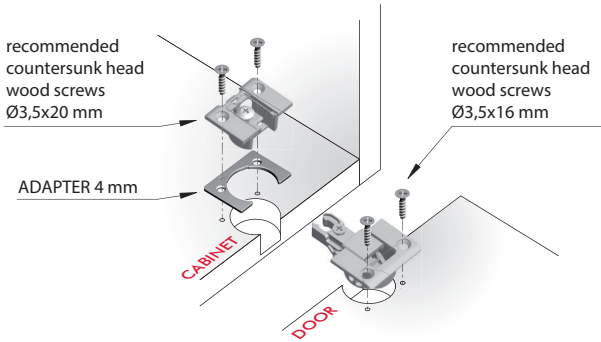
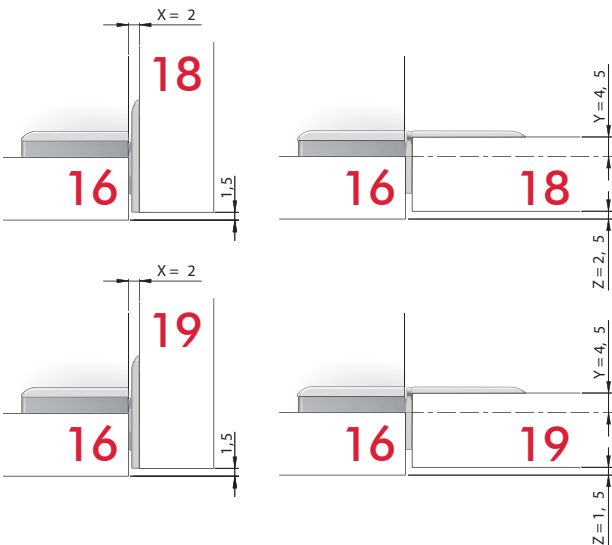
## Door 18-19 mm without adapter



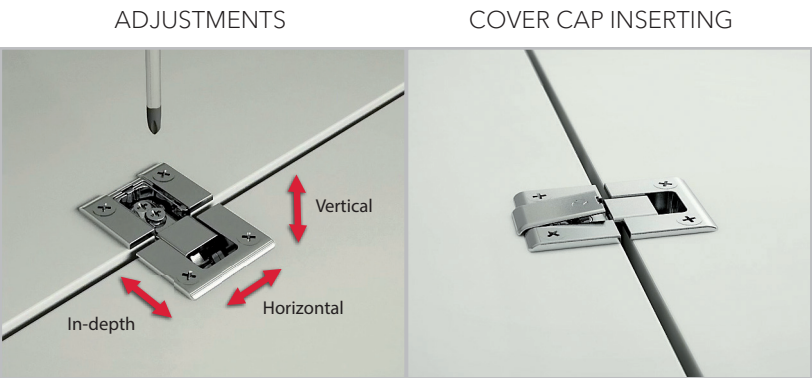
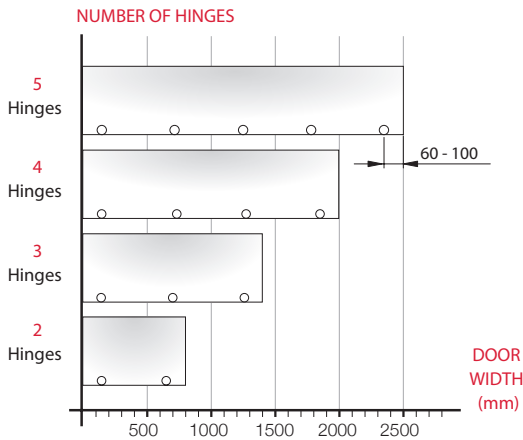
Boasting a minimalistic and elegant design, Kimana is also has a unique and exclusive movement. 3D adjustment and spacers for different cabinet/door thicknesses.



CABINET 16 mm WITH ADAPTER 4 mm THICK - DOOR 18-19 mm WITHOUT ADAPTER  
 0 + 2 mm FURTHER VERTICAL ADJUSTMENT



RECOMMENDED NUMBER OF KIMANA PER DOOR



IN-DEPTH: 0+2 mm    LATERAL: 0+1 mm    VERTICAL: 0+2 mm

Due to various factors, the quantities stated in the chart are indicative.





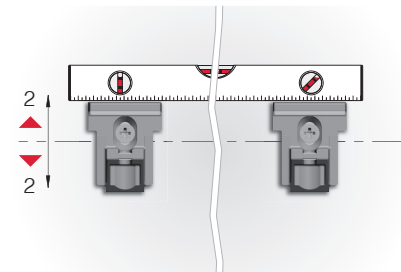
# KALABRONE MINI

From 5 up to 10mm thick glass shelves  
Shelf depth max: 150mm

Sleek design the shelf is safely clamped between soft rubber layers.

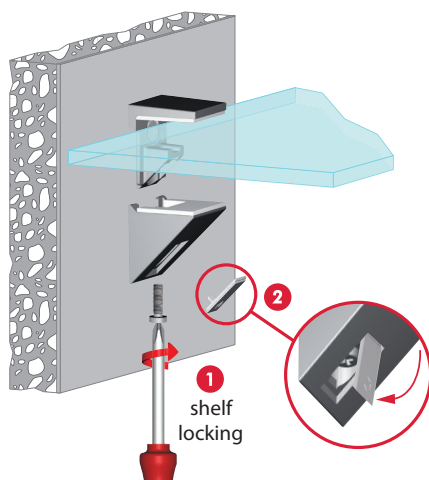


BRACKET ALIGNMENT

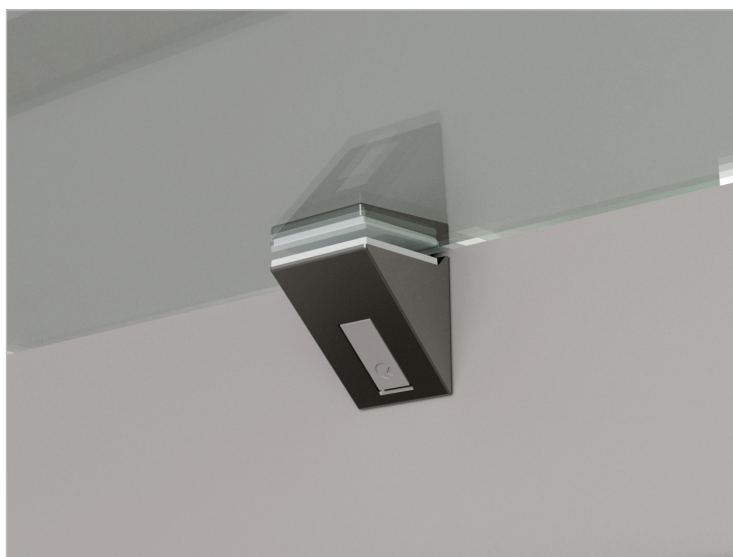
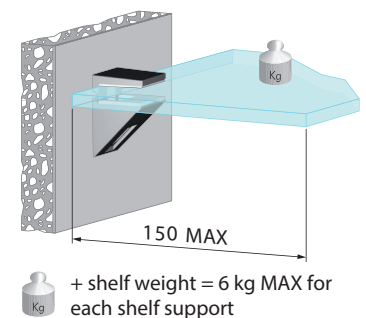
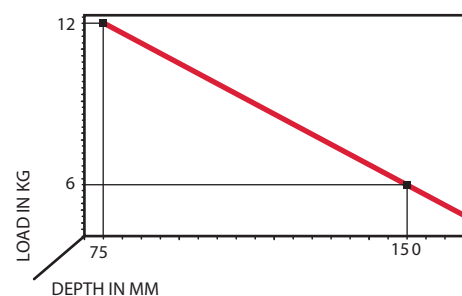


600mm - 2 pieces  
900mm - 3 pieces  
1200mm - 4 pieces  
1500mm - 5 pieces

SHELF LOCKING



COMBINATION SHELF LOAD AND SHELF DEPTH  
(The figures refer to 1 shelf support)



# KALABRONE MAXI (Heavy Duty)

For minimum 8 up to 30 mm thick shelves  
Shelf depth max: 320mm

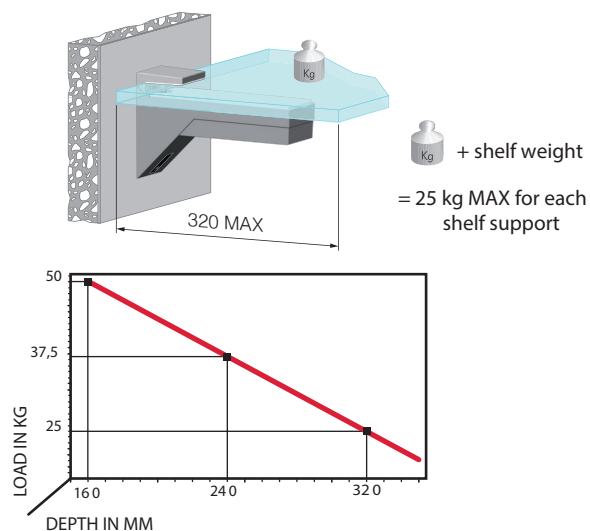
SHELVING SYSTEMS

Modern and squared design, ideal for both wood and glass shelves, performing heavy duty load.  
Shelf is clamped between a layer of ridged plastic on the lower side and soft rubber on the upper side.  
Useful 2D adjustments to perfectly align and tilt the shelf against the wall.

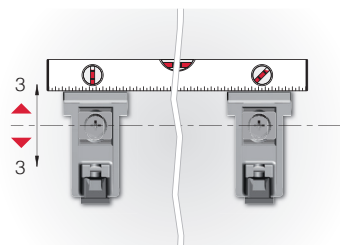
up to 1200mm - 1 pair  
up to 2400mm - 2 pairs

## COMBINATION SHELF LOAD AND SHELF DEPTH

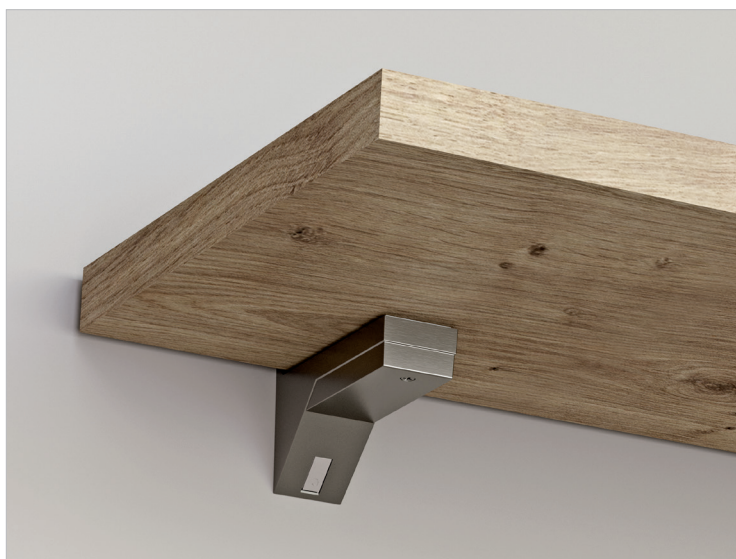
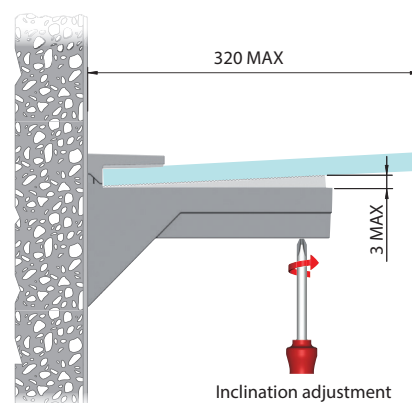
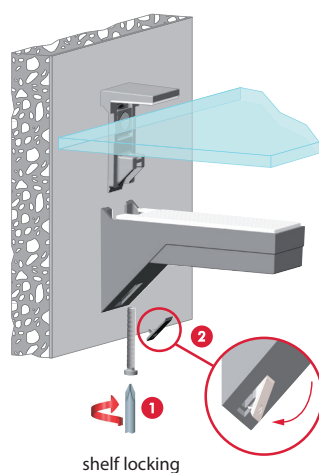
(The figures refer to 1 shelf support)



## BRACKET ALIGNMENT



## SHELF LOCKING AND INCLINATION



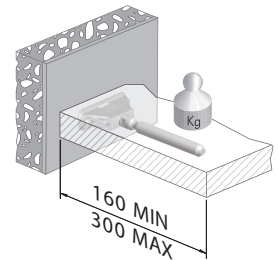




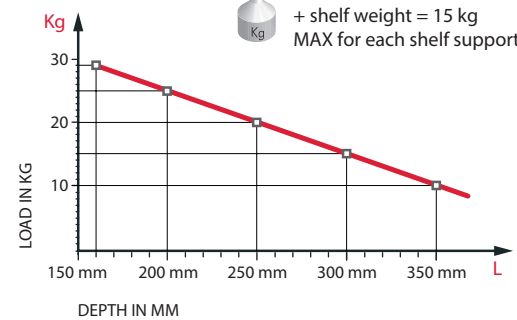
Excellent load capacity with 3D adjustments to ensure perfect installation.  
Use additional T-bracket for anchoring support in case of weaker walls.

## COMBINATION SHELF LOAD AND SHELF DEPTH

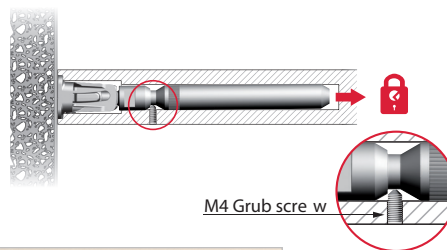
(The figures refer to 1 shelf support)



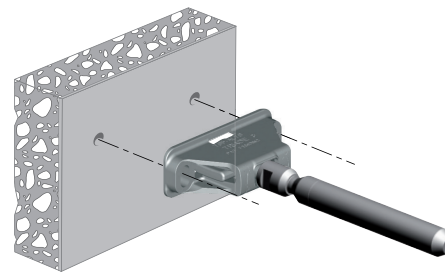
+ shelf weight = 15 kg  
MAX for each shelf support



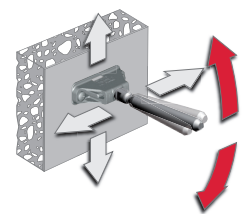
## OPTIONAL SECURITY LOCKING



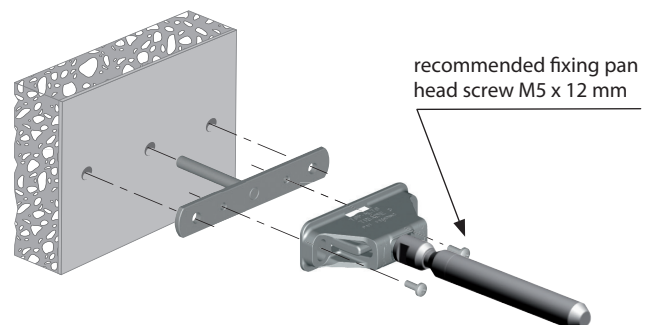
## TRIADE



## ADJUSTMENTS

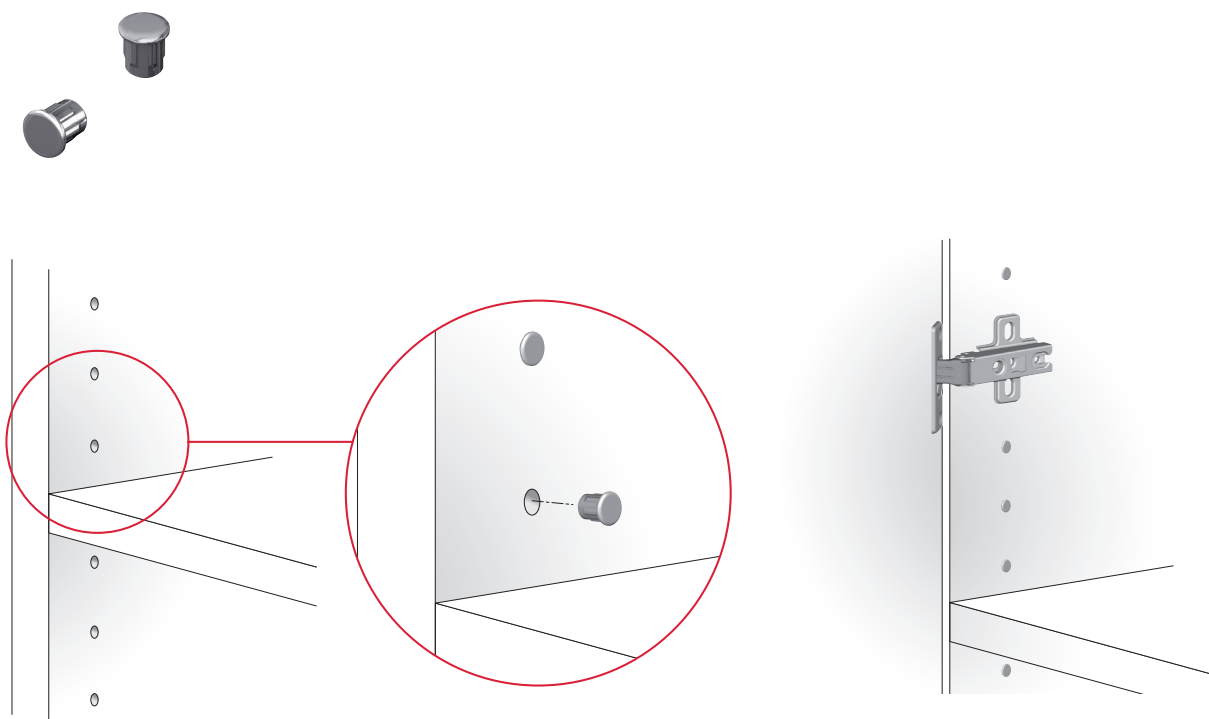


## TRIADE AND BRACKET





Cover Cap in Iron and nickel plated, an essential detail to add that extra touch to your exclusive furniture.  
To be simply inserted onto any Ø 5 mm hole, making the aesthetics of your furniture more innovative and captivating.  
is sheer ELEGANCE.

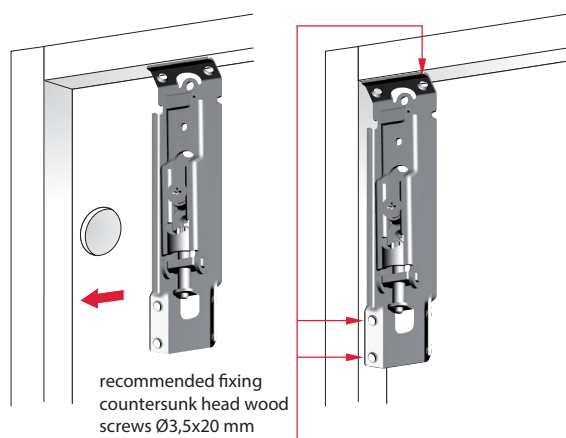




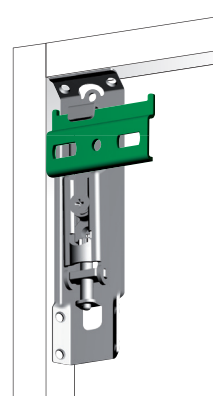
APC1 is a two-handed invisible screw fixing cabinet hanger requiring a simple installation, without any pre-drilling operations.  
 It can be installed on cabinets with a minimum sanitary gap of 16 mm.  
 Independent Vertical and In-Depth adjustment to easily and quickly align the cabinet against the wall.  
 The adjustments can be carried out from the inside of the cabinet through a hole covered through a round cover caps.  
 Capacity loading 65 Kilos per piece (130 Kilos per pair).  
 In accordance with the European Regulation UNI EN 15939.



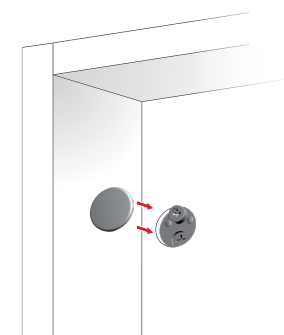
INSTALLATION UNDER THE CABINET TOP



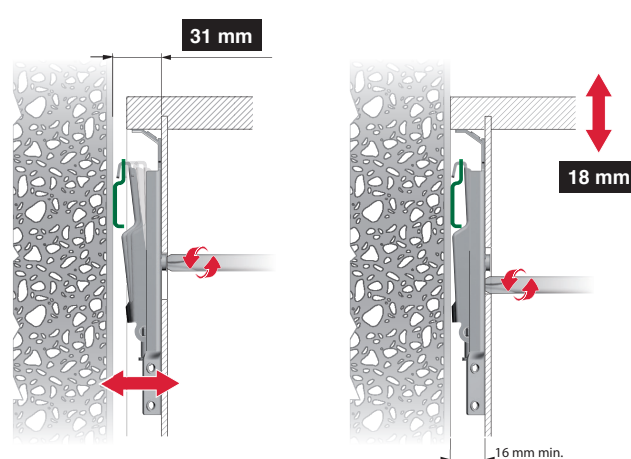
INSTALLATION ON THE WALL



COVER CAP INSERTING



ADJUSTMENTS



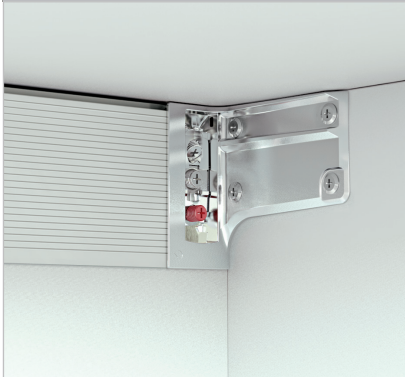
# LIBRA H7 (excl. ALU bar)

## Optional alu bars for extra support for drawer units - see page 11



Conceived for suspended base units.  
Excellent load capacity, 3D adjustments, and cover caps to make it discreet.  
Optional aluminium bars for even better capacity loading and stability.  
Comes with in built anti-turnover lock.

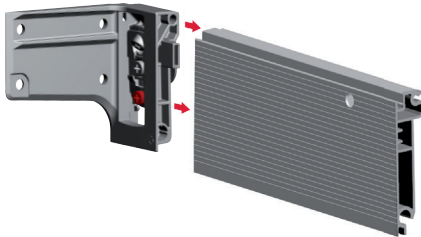
- \*MAXIMUM : 600 DEEP + DRAWERS.
- \*NO HEIGHT RESTRICTION.



LIBRA H7 SCREW  
FIXING WITH "PEG  
JOINT"



LIBRA H7 SCREW FIXING WITH "PEG  
JOINT" WITH ALU BAR H 80,5 mm



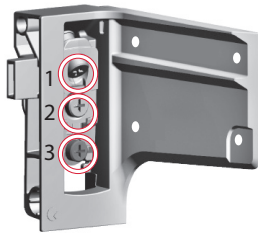
LIBRA WP5



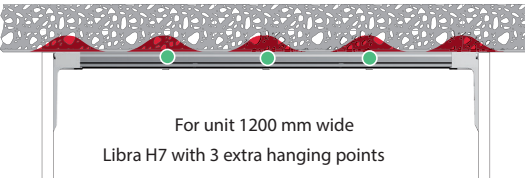
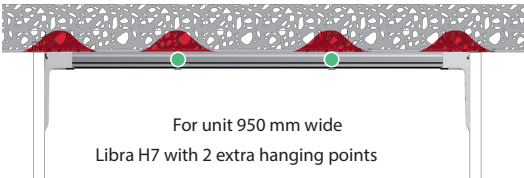
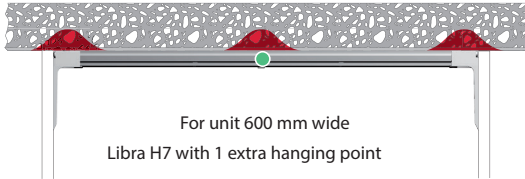
 = STRESS INTENSITY LEVEL ON THE WALL



By adding extra hanging points on the aluminium bar, the capacity loading is more evenly distributed, thus sensibly reducing the stress intensity level on the wall.



- 1 VERTICAL 13 mm
- 2 IN DEPTH 12 mm
- 3 ANTI-TURNOVER LOCKING





# Aluminium Bar for LIBRA H7

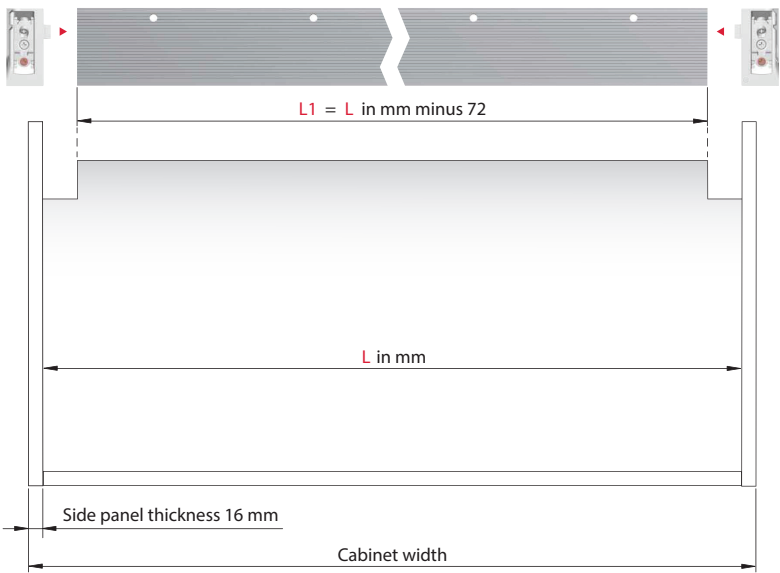
H 80.5mm

1 SET PER UNIT	
300 mm	800 mm
400 mm	900 mm
450 mm	1000 mm
500 mm	1100 mm
600 mm	1200 mm

Above prices include 1 x pair of Libra H7

Suggested positioning of pre-drilled Ø 8 or Ø 10 intermediate pilot holes according to cabinet width

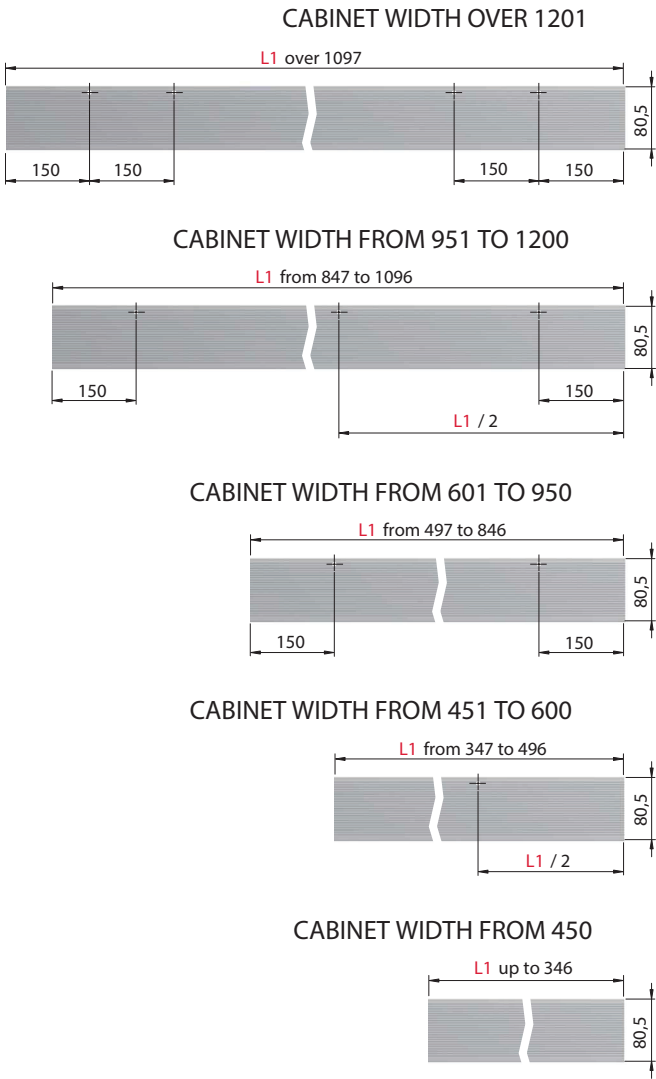
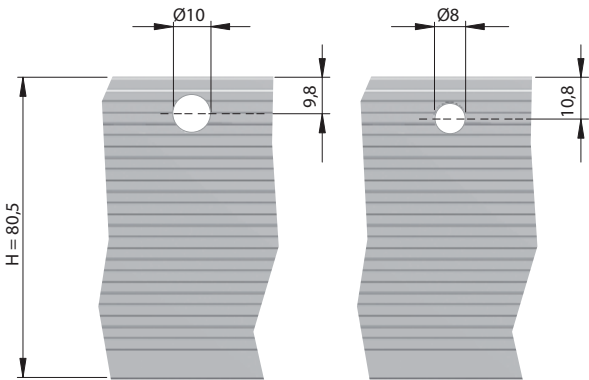
The following cutting patterns refer to cabinet 16 mm thick. For different cabinet thickness, please contact the office



SUGGESTED COMBINATIONS:

CABINET WIDTH (mm)	INTERMEDIATE PILOT HOLES
up to 450	-
from 451 to 600	1
from 601 to 950	2
from 951 to 1200	3
over 1201	4

## OPTIONAL PRE-DRILLING OPERATIONS



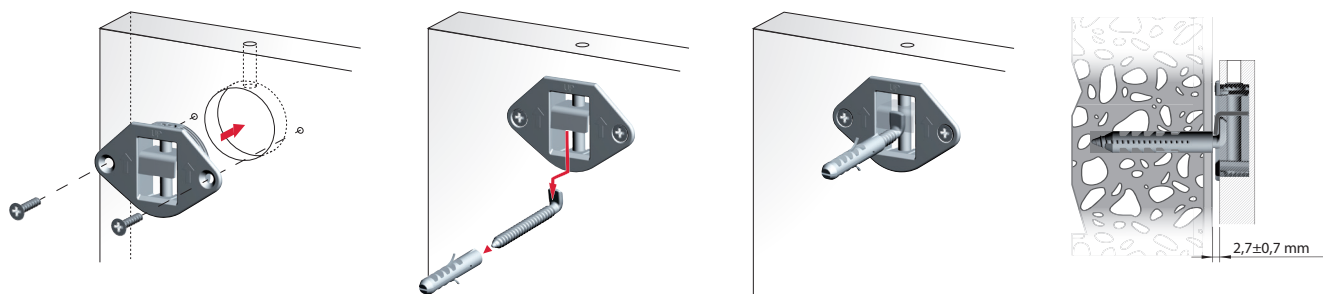
# CONCEALED HANGER

for mirrors & boxes

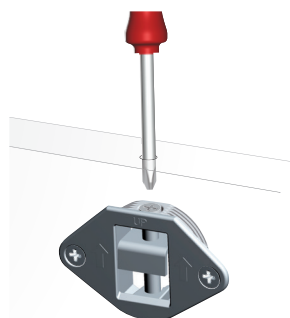
Ideal for fixing mirror panels  
A through hole in the top edge, allows to align brackets vertically.  
Lateral adjustment which allows user-friendly fixing in place of mirrors and panels  
Capacity loading 80 Kilos per pair.



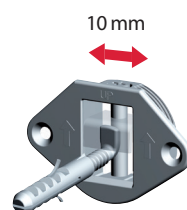
## INSTALLATION ON THE REAR PANEL AND ON THE WALL



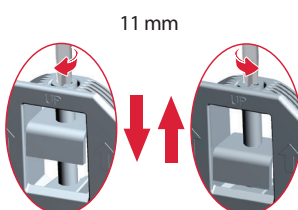
## ADJUSTMENTS



### LATERAL ADJUSTMENT



### VERTICAL ADJUSTMENT

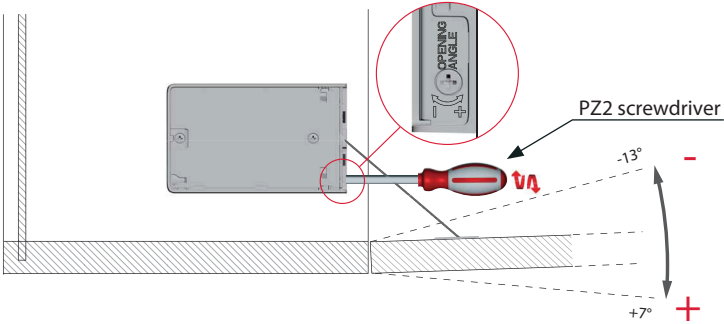




# KIARO EASY

## Drop down wired system

Our new elegant opening system for drop-down doors is defined by minimalist shapes and smooth movement. The result is a compact and well-proportioned solution for smaller doors. Easily installed on either side, thus optimizing stock management, it comes with 2 references featuring different strength settings, to slow down a wide range of door sizes. Same highly strong wire conceived for Karo and open-angle adjustment, with both embedded and screw fix door brackets options. Available in 4 colours for a clean combination with your style.



### Door in MDF

Door height	Door width	Door thickness		
200	600	18 mm	20 mm	22 mm
200	900	1 pc. Soft	1 pc. Soft	1 pc. Soft
200	1000	2 pcs. Soft	2 pcs. Soft	2 pcs. Soft
200	1200	2 pcs. Soft	2 pcs. Soft	2 pcs. Soft

### Door in MDF

Door height	Door width	Door thickness		
300	600	18 mm	20 mm	22 mm
300	900	1 pc. Strong	1 pc. Strong	1 pc. Strong
300	1000	2 pcs. Strong	2 pcs. Strong	2 pcs. Strong
300	1200	2 pcs. Strong	2 pcs. Strong	2 pcs. Strong

### Door in MDF

Door height	Door width	Door thickness		
360	600	18 mm	20 mm	22 mm
360	900	1 pc. Strong	1 pc. Strong	1 pc. Strong
360	1000	2 pcs. Strong	2 pcs. Strong	2 pcs. Strong
360	1200	2 pcs. Strong	2 pcs. Strong	2 pcs. Strong

### Door in MDF

Door height	Door width	Door thickness		
400	600	18 mm	20 mm	22 mm
400	900	1 pc. Strong	2 pcs. Strong	2 pcs. Strong
400	1000	2 pcs. Strong	2 pcs. Strong	2 pcs. Strong
400	1200	2 pcs. Strong	3 pcs. Strong	3 pcs. Strong



Kiara Easy anthracite with door bracket screw fix.  
Available on demand: light grey, white and brown.

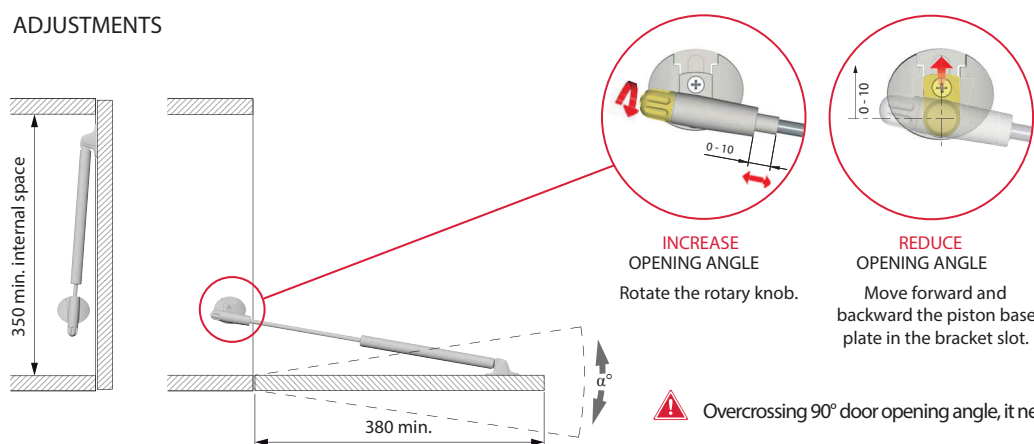


# KRABY FOR WRITING DESK

The latest evolution of our Kraby system: the exclusive solution for writing desks. Sturdy and elegant, Kraby is ideal for your home office and study room, suitable for wide doors and narrow cabinets thus optimising the use of smaller spaces.



## ADJUSTMENTS



## Door in MDF

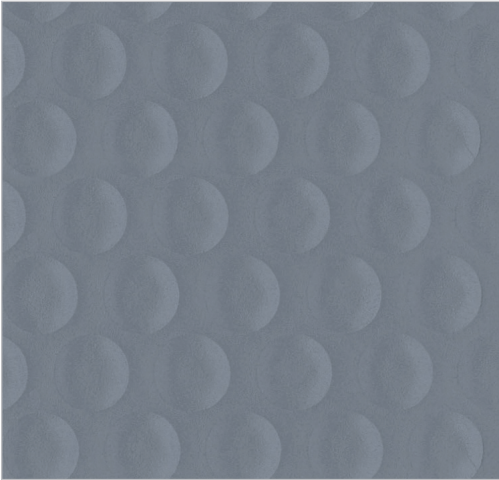
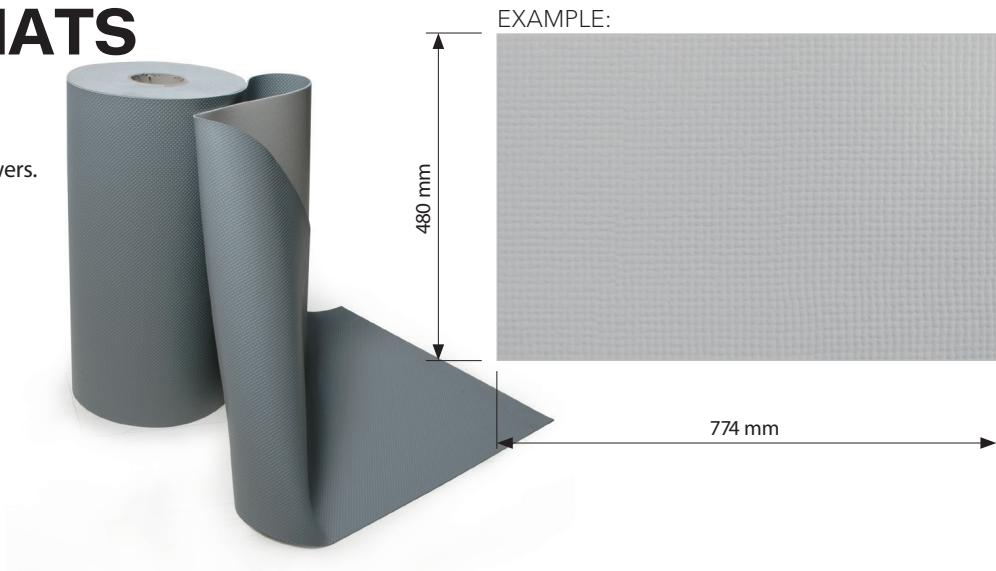
Door height	Door width	Door thickness		
		18 mm	20 mm	22 mm
400	600	2 pcs.	2 pcs.	2 pcs
400	900	2 pcs.	2 pcs.	2 pcs
400	1000	2 pcs.	2 pcs.	2 pcs
400	1200	2 pcs.	2 pcs.	2 pcs





# NON-SLIP MATS

In light grey colour for doors and drawers.  
Latest design in wave finish.  
Dripless.



**DRIPLESS for Prep / Sink units -** AVAILABLE IN LIGHT GREY

**580 x 1,7 mm thickness - for PREP / SINK UNITS**

500mm	
600mm	
800mm	
900mm	
1000mm	
1100mm	
1200mm	



**WEAVE FINISH -** AVAILABLE IN LIGHT GREY

**465 x 1,2 mm thickness - for Drawers and Pot drawers**

BASE UNIT SIZE	PRICE PER DRAWER	BASE UNIT SIZE	PRICE PER DRAWER
300mm		900mm	
400mm		1000mm	
450mm		1100mm	
500mm		1200mm	
600mm			
750mm			
800mm			

**580 x 1,2 mm thickness - for BASE & TALL UNITS**



BASE/TALL UNIT SIZE	PRICE PER SHELF	BASE/TALL UNIT SIZE	PRICE PER SHELF
300mm		900mm	
400mm		1000mm	
450mm		1100mm	
500mm		1200mm	
600mm			
750mm			
800mm			

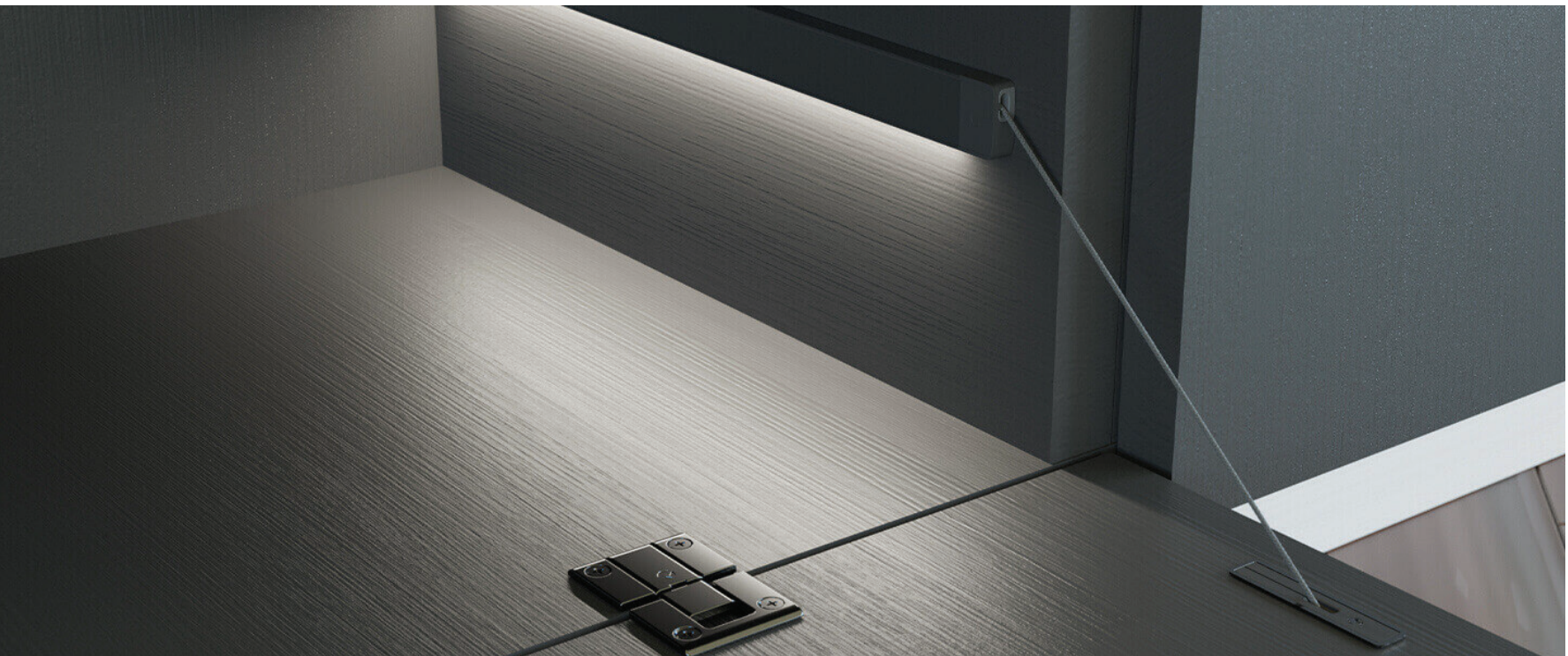
**580 x 1,2 mm thickness - for WALL UNITS - 300 deep**



WALL UNIT SIZE	PRICE PER SHELF	WALL UNIT SIZE	PRICE PER SHELF
300mm		900mm	
400mm		1000mm	
450mm		1100mm	
500mm		1200mm	
600mm			
750mm			
800mm			

# KIARO OPENING SYSTEM

with aluminium profile



KIARO is an opening system for drop down doors with a concealed mechanism which allows to adjust the settings depending on door weight and dimension, thus enabling to manage a wide range of doors with only one reference. As it is a two-handed mechanism, it can be installed both on right and left side. A high resistance technical wire grants a significant loading capacity together with minimal shapes and elegant design. Available in two finishes which respond to the current overriding trends in the furniture appliances industry. It is conceived also to be installed with integrated led lighting.



Including 2 Kimana Hinges





# GRACE GLASS SHELF SUPPORT



GRACE is a glass shelf support boasting a unique design with its modern and fresh aesthetics. It is a safe shelf support which allows the cabinets to be delivered with pre-mounted shelves. Provided with an engineering plastic insert on the lower side, it perfectly locks the shelf and reduces the risk of damage to the glass shelf. Locking and unlocking the shelf is absolutely fast and easy with GRACE.



NICKEL 6MM



BLACK NICKEL 6MM



NICKEL 8MM



BLACK NICKEL 8MM

## MOON SHELF SUPPORT

For minimum 4 up to 25 mm thick shelves



Moon is a decorative and structural shelf support for free-standing shelves. It is made of zinc alloy and engineering plastic. Boasting a fresh and contemporary design, it is ideal for wood shelves from 15 to 50 mm thick. Moon allows a perfect and permanent alignment of the brackets against the wall. High capacity loading: 50 kilos per pair, with 320 mm shelf depth.

**1200mm wide - 1 pair**  
**2400mm wide - 2 pairs**

# ATAK SHELF SUPPORT

Transparent & bolt combination for shelf support.



# OR GLASS SUPPORT

Glass support with 5mm pin



# K-LINE BLACK

Fresh & slim design used for both wood and glass with smooth pin 5 mm.  
Same element for glass shelf by simply applying a bespoke layer of rubber.  
Load carrying capacity: 80 kg/per set of 4 pieces.



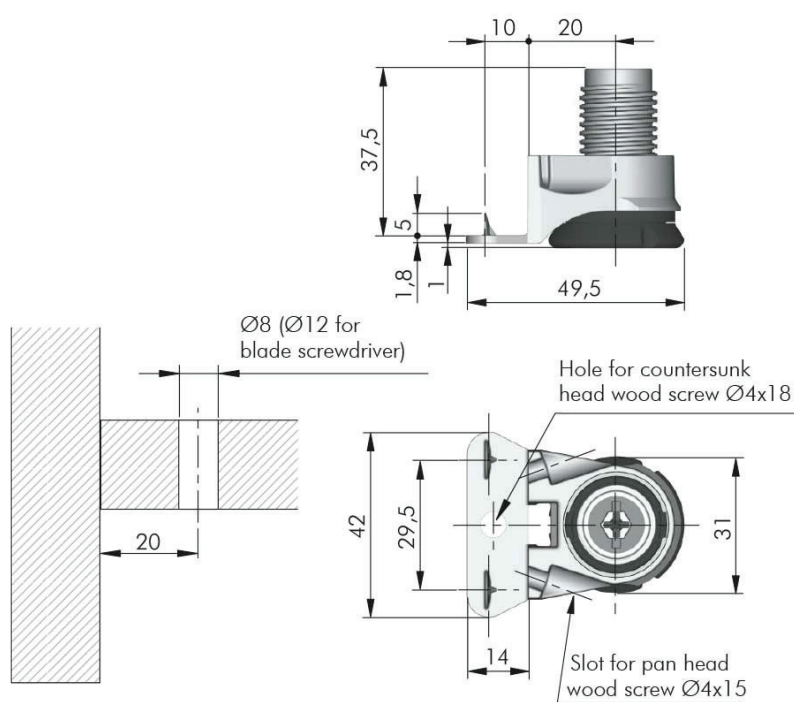
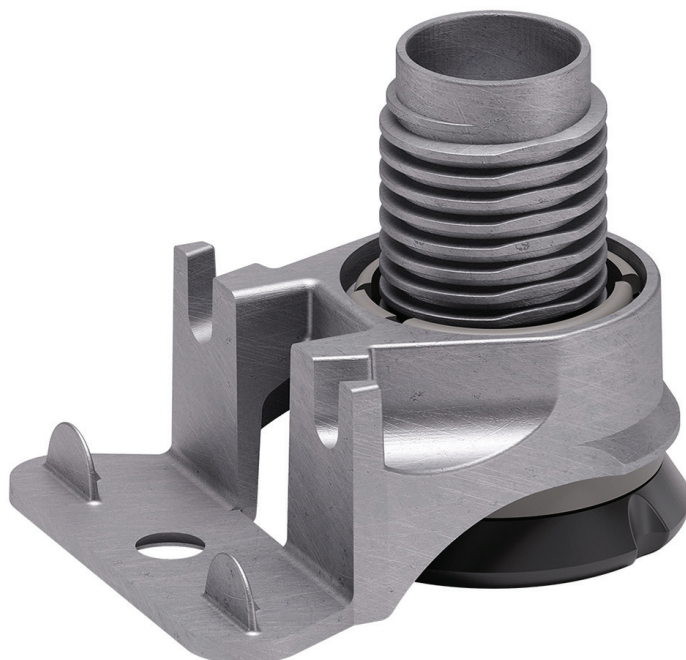
# BIMATERIAL DOOR BUFF





# INTEGRATO LEGS

INTEGRATO G height adjuster 2 spikes H25



**THE KITCHEN STUDIO**

[www.kitchenstudio.com](http://www.kitchenstudio.com)